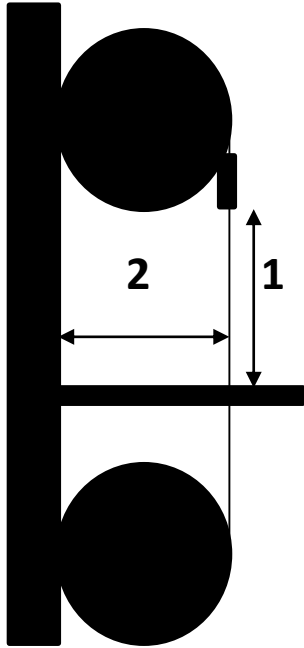


Die gebruik van die Bandsaag vir Houtdraaiwerk



Bandsaag

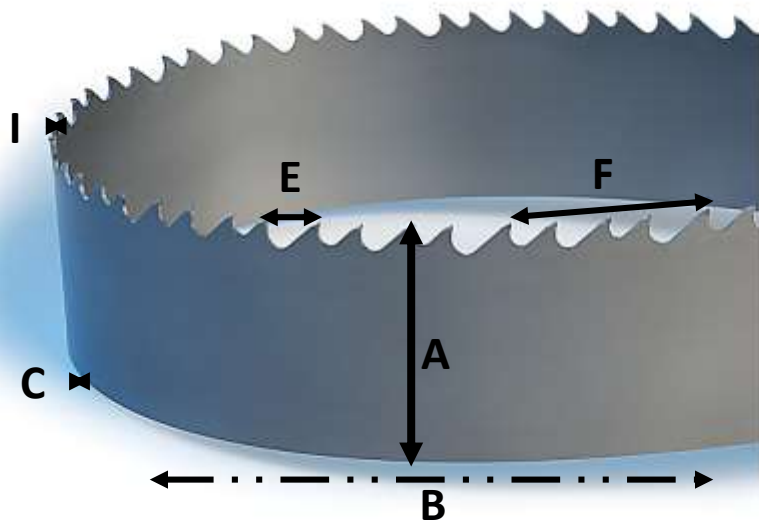


1. Depth of cut
2. throat (width of cut)

Uitdaging vir 'n draaier se bandsaag is:

- Dik hout – 1 belangriker as 2
- Nat hout – Kw

Saaglem Inligting



A - WIDTH

Tip of the cutting edge to the back of the blade.

B - LENGTH

Measurement along the back edge of the blade.

C - THICKNESS

Measurement of the body of the blade.

E - TOOTH PITCH

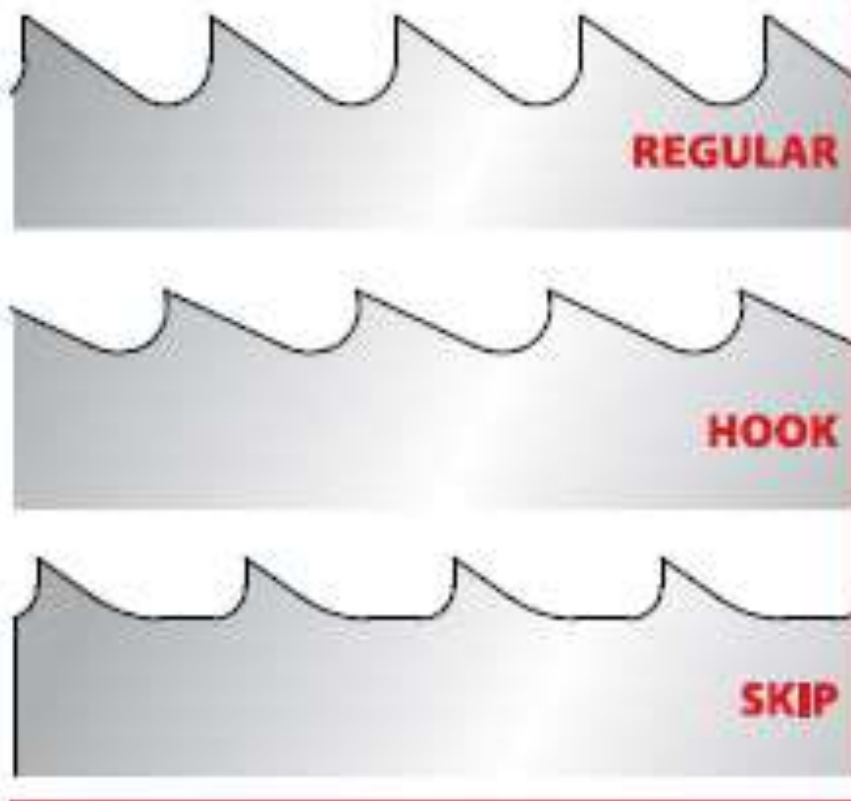
Distance from the tip of one tooth to the next tip.

F - TEETH PER INCH/25MM

Number of teeth per inch/25mm.

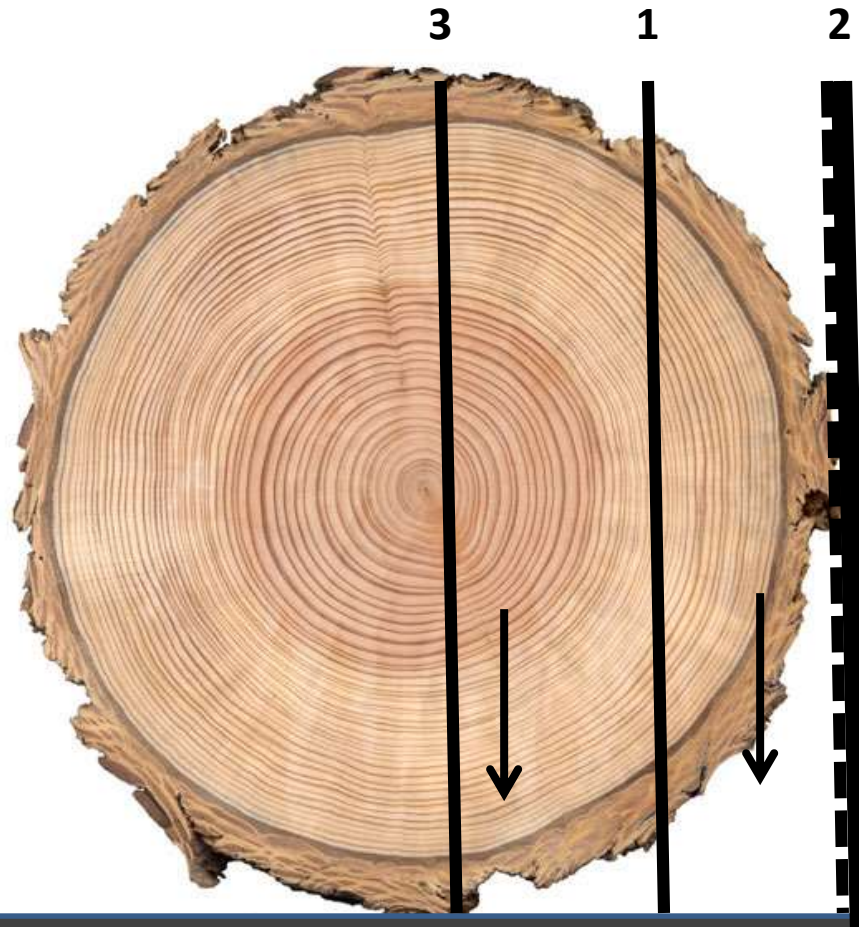
I - TOOTH SET

The bending of the teeth, right and left, to allow blade clearance through the cut.



10 x 0.55	3/8 x .022
10 x 0.65	3/8 x .025
13 x 0.55	1/2 x .022
13 x 0.65	1/2 x .025
16 x 0.55	5/8 x .022
19 x 0.70	3/4 x .028
19 x 0.90	3/4 x .035

Gevaarpunte

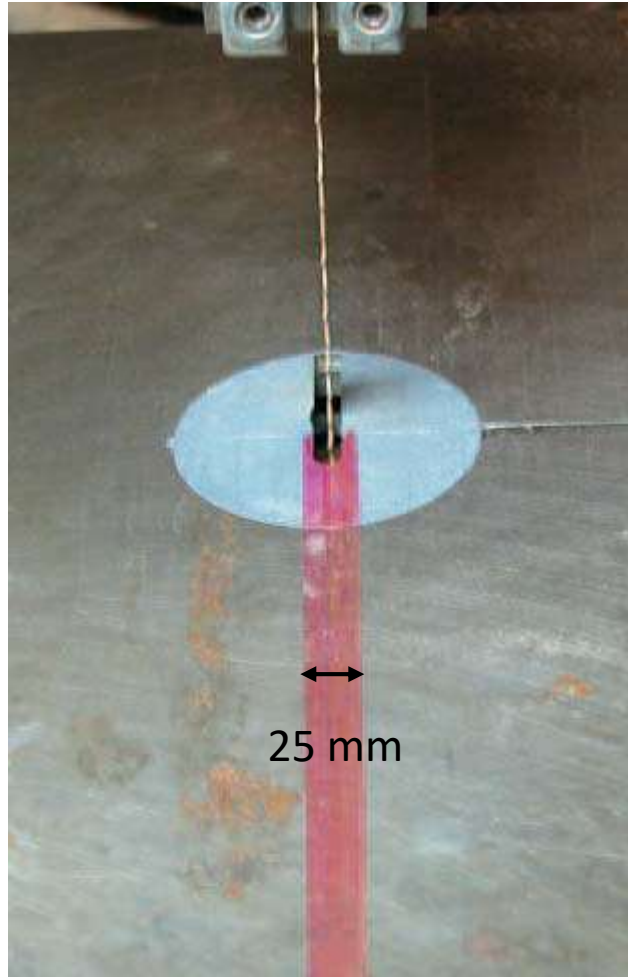


1. Lengtesnit
2. Dwarsnit
3. Lengtesnit ondersteun

Enkele Tegnieke

- Merk 'n rooi sone – Marking a red zone
- Dwarssnit - Crosscut
- Lengtesnit - Ripping
- Saag van sirkels – Circular cutting

Root sone - Red Zone



Dwarssnit - Crosscut





Lengtesnit - Ripping

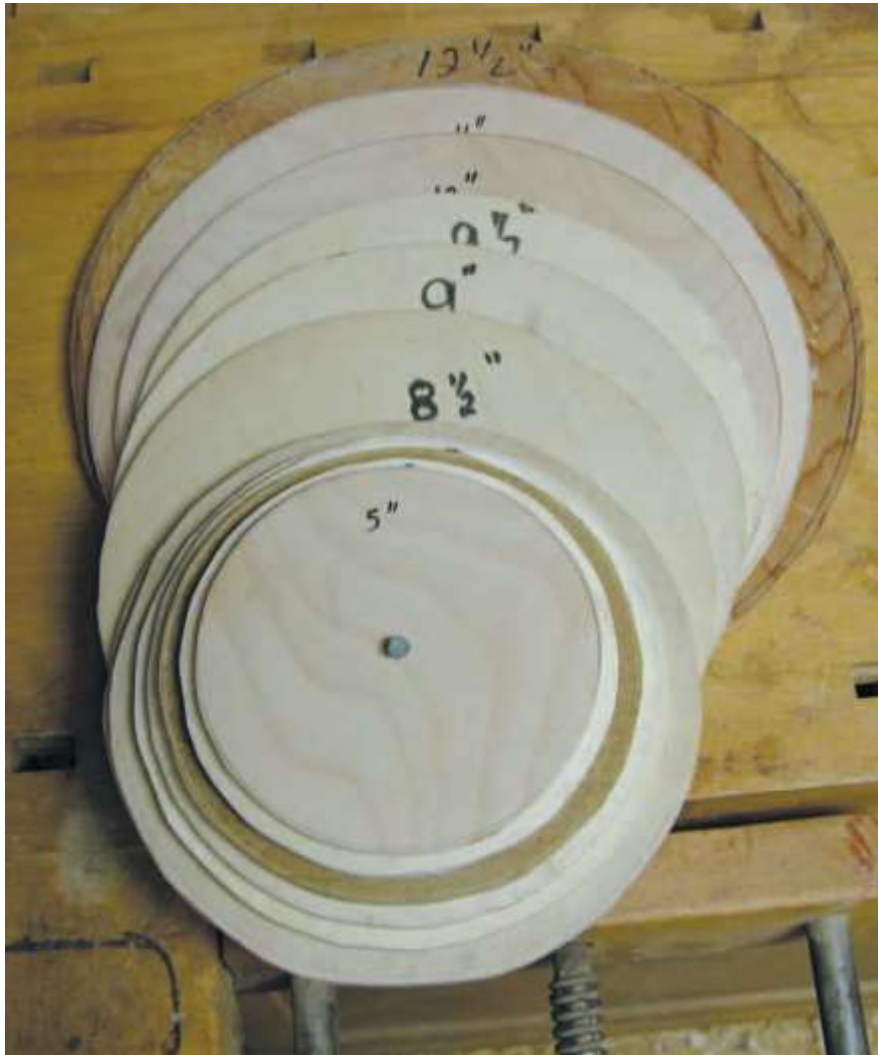








Saag van sirkels – Circular cutting



Circles with a jig







Finis