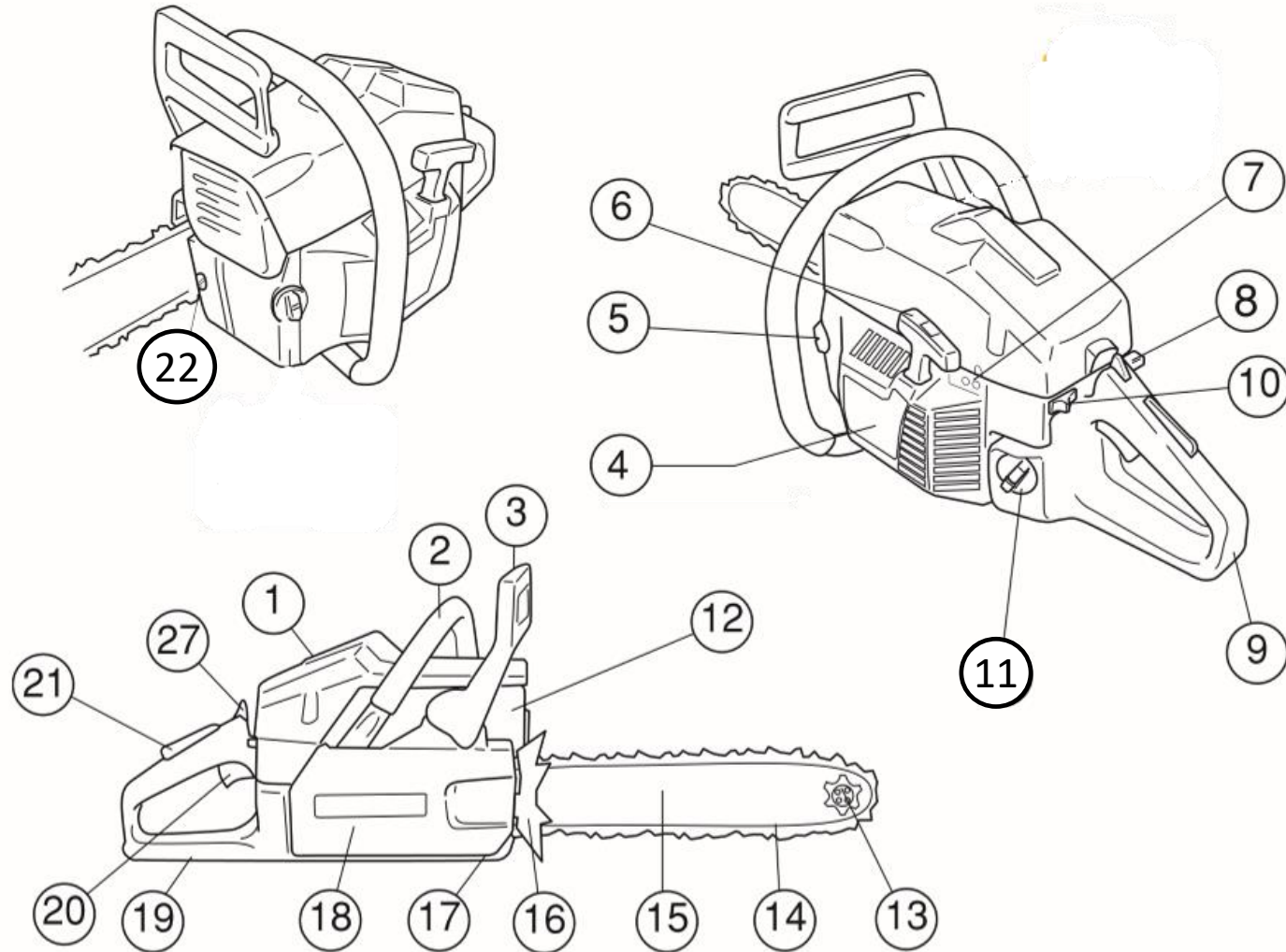


Working with chainsaws
PART 1

External Components of a chainsaw



Contents.

- Safety first.
- Basic rules for chainsaw work.
- Tree felling.
- De-branching
- Crosscutting.
- Maintenance of cutting equipment.



Safety First.

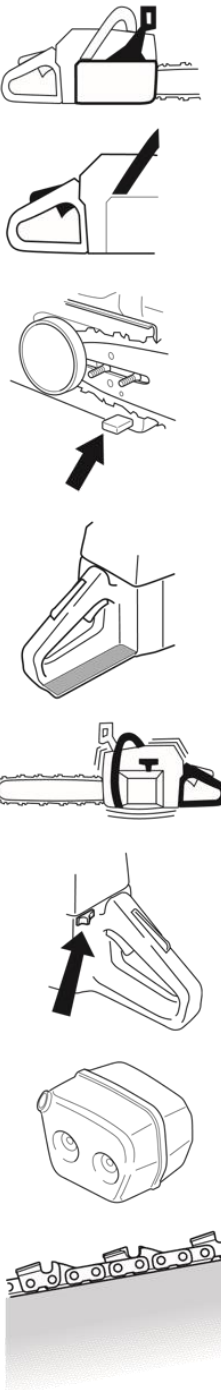
Safety requirements for chainsaws.

Kickback guard and chain brake.

Left hand wrist.



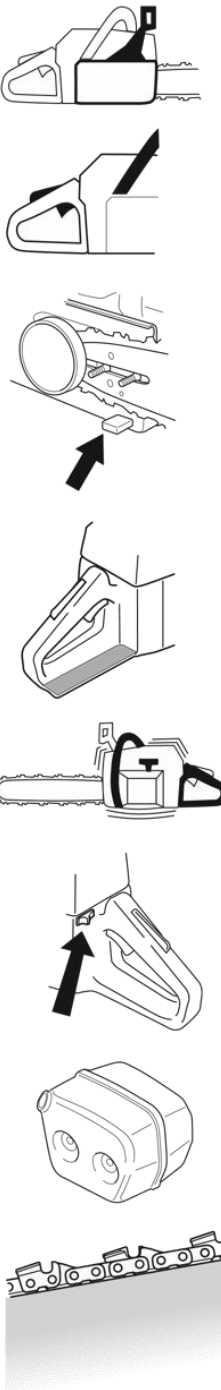
Inertia.



Safety Features.



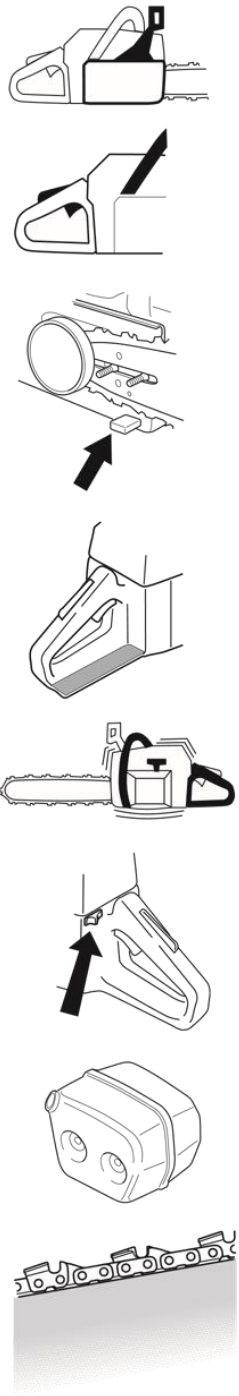
Chain catcher.



Safety Features



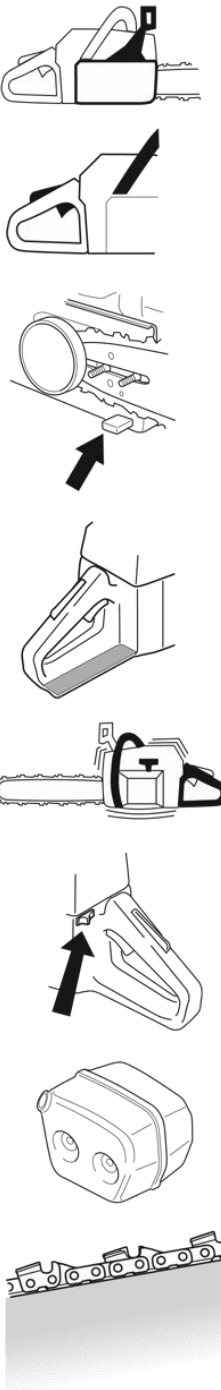
Right-hand guard.



Safety Features.



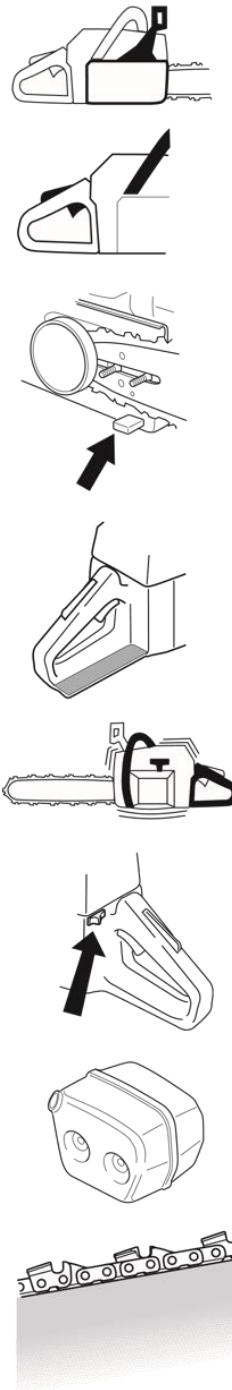
Throttle lock.



Safety Features.



Easy accessible stop control.



Basic rules for working with a chainsaw.



Work tasks with risk of kickback.



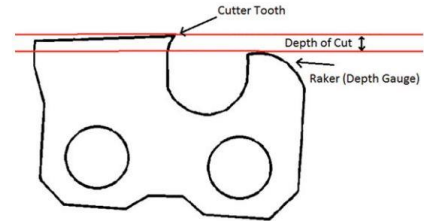
Felling and crosscutting.



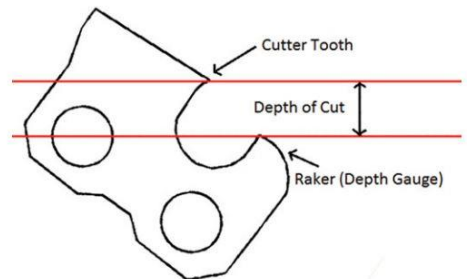
Kickback risk when debranching.

About Kickback

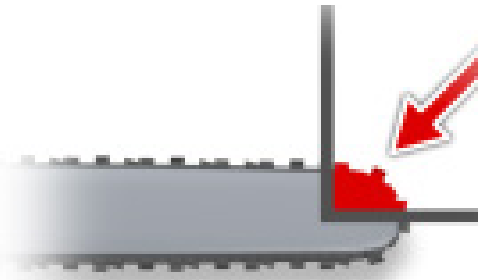
- Kickback Zone.
- Depth of cut – centre of bar.
- Depth of cut – Kickback zone!



Graphic 1: Depth of cut when chain passes along the length of the guide bar.
Graphics courtesy of the author.



Graphic 2: Depth of cut when the same chain passes along the upper quadrant of the guide-bar tip.



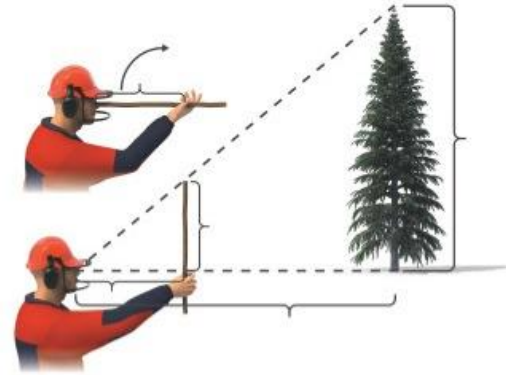
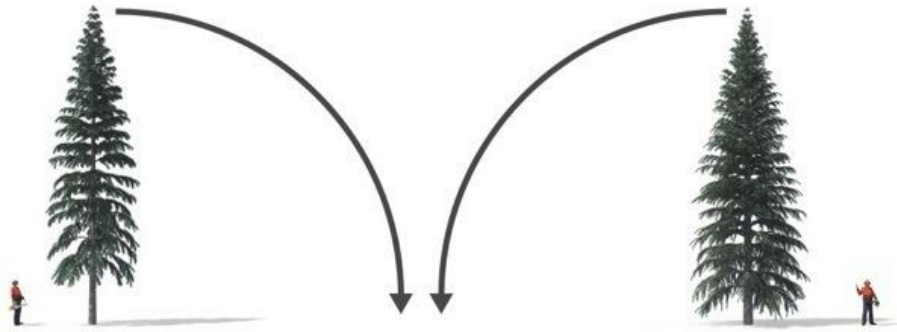
Avoid working alone!



TREE FELLING



Working technique and safety.

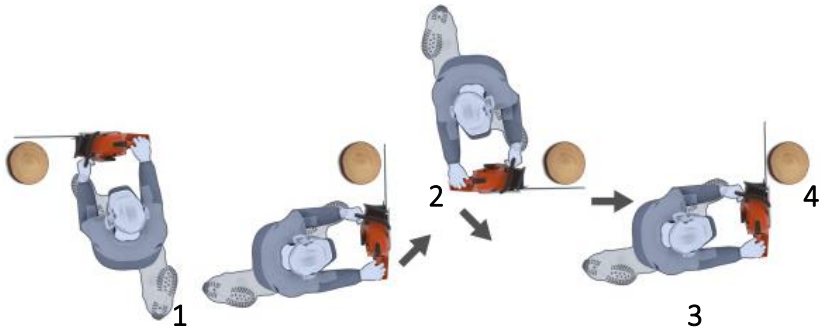


Preparations before felling.

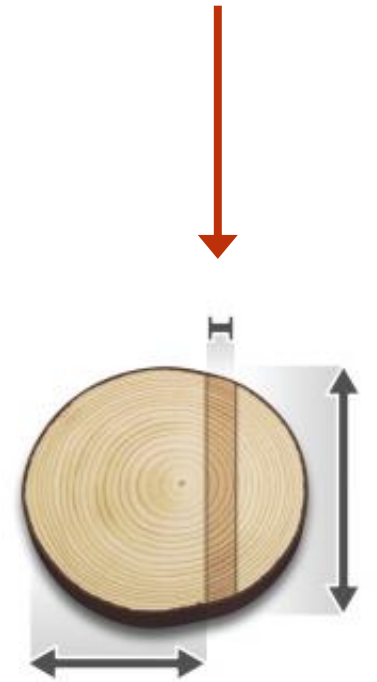


Escape Routes.

Preparations before felling.



Directional felling.



Aiming with the chainsaw.



Open-face directional notch



Open-face directional notch



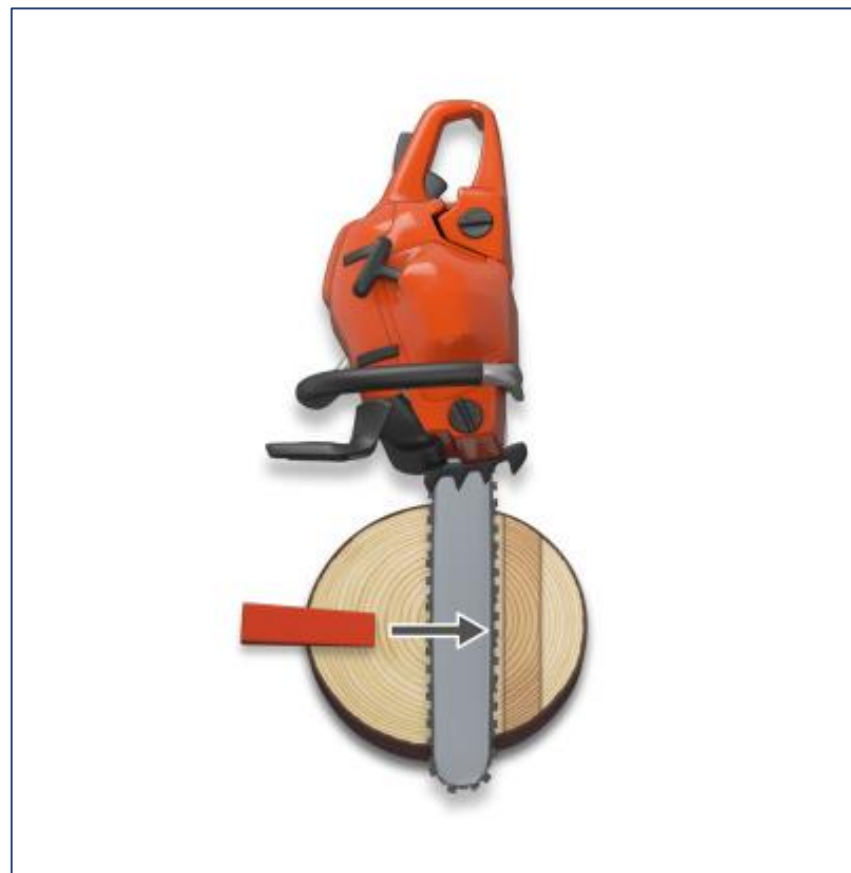
Aim with the top cut.

Open-face directional notch



Techniques for the felling cut: Small trees.

Felling cut straight from behind.



The escape path is your lifeline.



In case of a hang-up.



Tools for solving a hang-up.



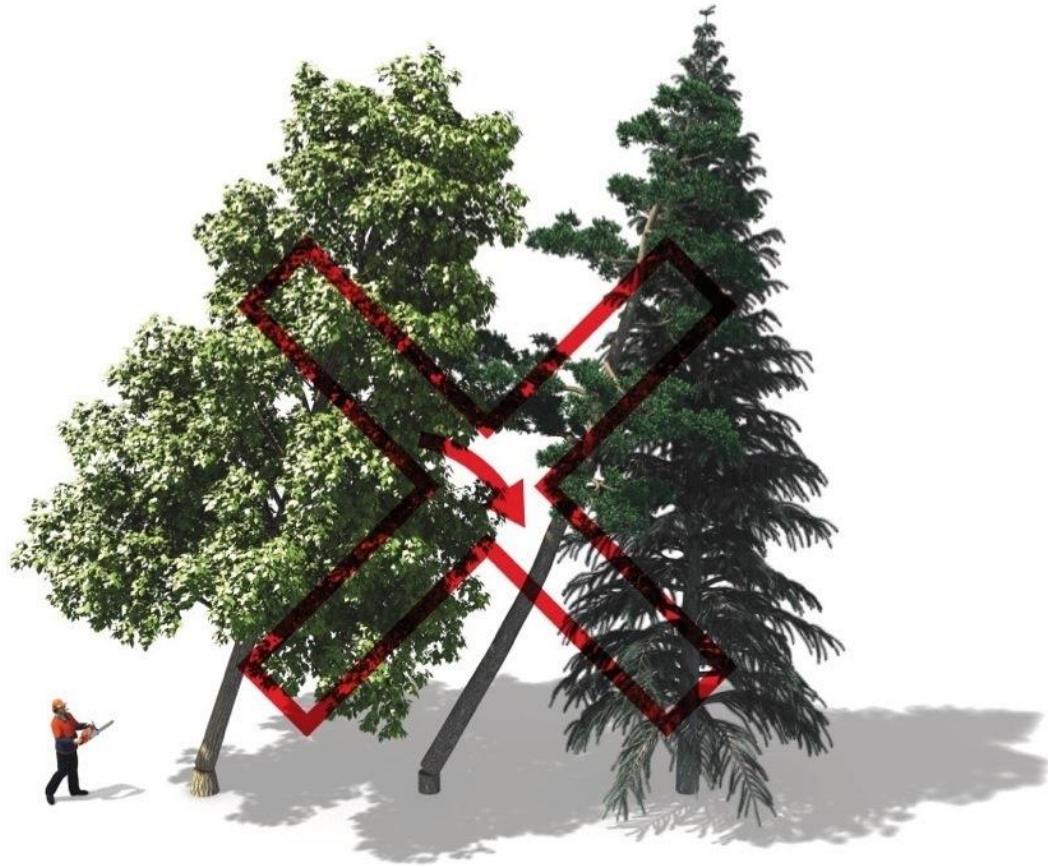
Rolling the tree.



NOTE: Never roll the tree towards you!

WARNING!

Never fell another tree over
an already trapped tree.



WARNING!

Never try to cut down the tree that has been felled on.



WARNING!

Never work within the danger zone of the hanging trapped trees.



Debranching basics.



Debranch calmly and methodically.



Debranch the right side.



Debranch the top



Debranch the left side

Debranching the downward face.



At a suitable working height.



The stem directly on the ground

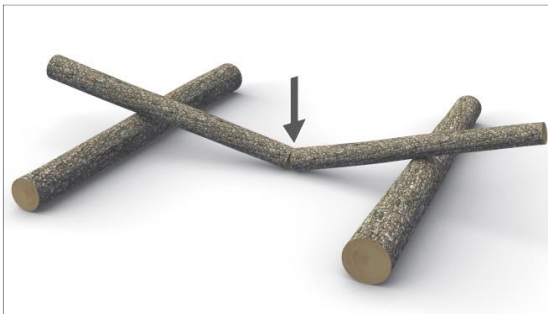
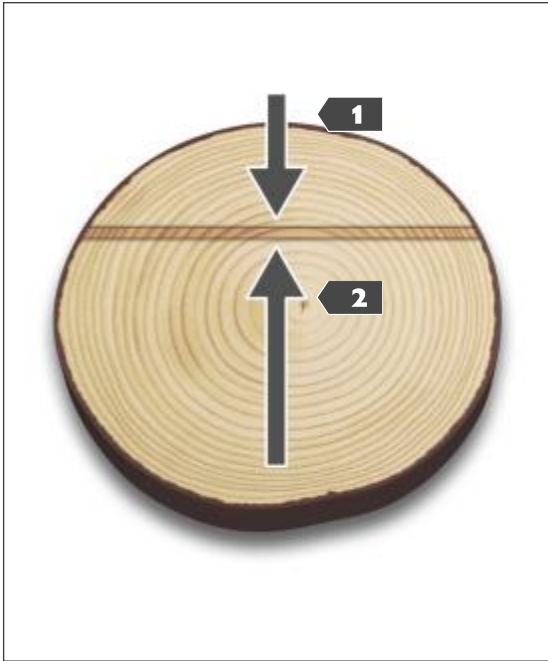


Removing thick branches.

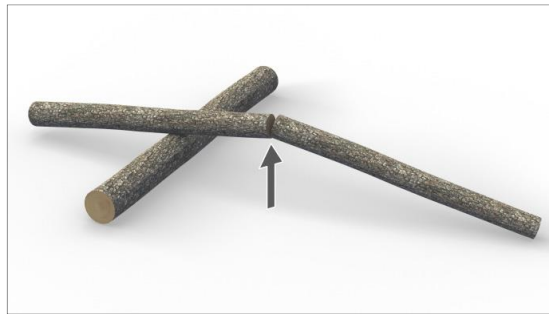
Safety when crosscutting.



Compressive stress from the top.



Compressive stress from the bottom.



MAINTENANCE OF CUTTING EQUIPMENT



Filing equipment.

- Round file.
- Flat file.
- File holder.
- Combination gauge with filing gauge and depth gauges.



Maintenance of cutting equipment.



Sharp Cutter



Hook (Hawks Beak)



Stone Damage.



Blunt Cutter



Back slope.

Thank you!

