

FEITE

- Verslae toon dat tussen 1817 en 1840 daar jaarliks duisende ton hout uit die Knysnabosse verwyder en verskeep is.
- 2000 vragte hout is jaarliks uit die bosse by George weggery.
- Met die ontdekking van diamante en goud het die aanvraag vir hout toegeneem. In 1893 is bv. 5646 wavragte, hoofsaaklik olienhout, deur Vryburg na Kimberley se diamantvelde.
- Die meeste hoofspoorlynne was reeds voor 1899 voltooi. Tot stinkhout en geelhout is as dwarslêers vir spoorlynne en brandhout vir die lokomotiewe gebruik.
- 7250 sederhoutpale is vir die telefoonlyn tussen Calvinia en Piketberg gebruik. Vandag is daar baie min in die Sederberge beskikbaar.
- Rondom Sabie was daar woude. Vandag is daar net kolletjies oor.
- Die Swartwoud, naby Pietermaritzburg, wat ongeveer 3200 hektar groot was het totaal verdwyn.
- In Kwa Zulu/Natal is waardevolle jongboompies op grootskaal vir die bou van krale en hutte gekap.

SOEK 'N PLANK
SEARCH FOR A BOARD / PLANK

TERME / TERMS

- BLOK: Boomstam waarvan die takke verwyder is en na 'n lengte gesaag is.
LOG: Tree trunk with the branches removed and cut to a length.
- PLANK: Breedte minstens drie maal die dikte, maar dikte minder as 150 mm.
BOARD: The breadth is at least three times the thickness, but thickness less than 150 mm
- STOMP: Gedeelte wat in die grond agterbly nadat boom gevel is.
STUMP: Part that remains in the ground after the tree been felled.
- BASBALK: Blok waarvan die skaaldeel afgesaag is.
CANT: A log of which the slab is cut off.

BLOKKE / LOGS

Beste blokke is van bome wat rypheid bereik het, aangesien dit dan die maksimum hoeveelheid hout lewer en van die beste kwaliteit is.

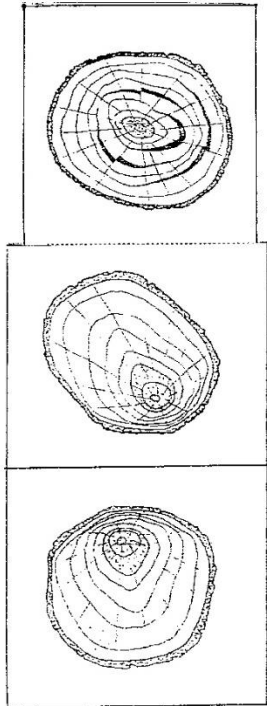
For best logs it is better to fell trees when maturity has been reached, because then it produces wood of maximum quantity and the best quality.

UITKENNING VAN BLOKKE / IDENTIFICATION OF LOGS

- Boom bereik ouderdom volgens spesie.
Tree required age according to the species.
- Bas soms donkerder en skurwer.
Bark becomes sometimes rough and darker.
- Blok meer silindries as konies.
Log more cylindrical than conical.
- Saphout smaller en donkerder.
Sapwood more narrow and darker.

DEFEKTE: BLOKKE

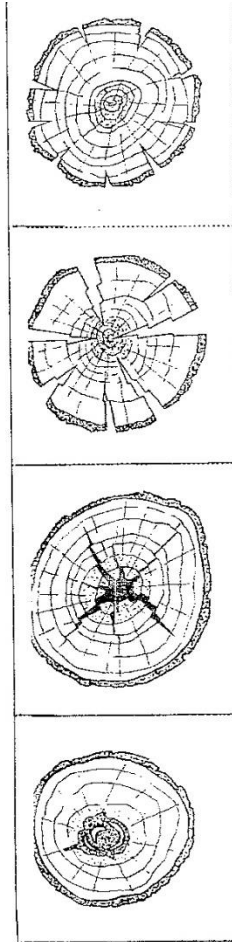
DEFECTS: LOGS



1

2

3



4

5

6

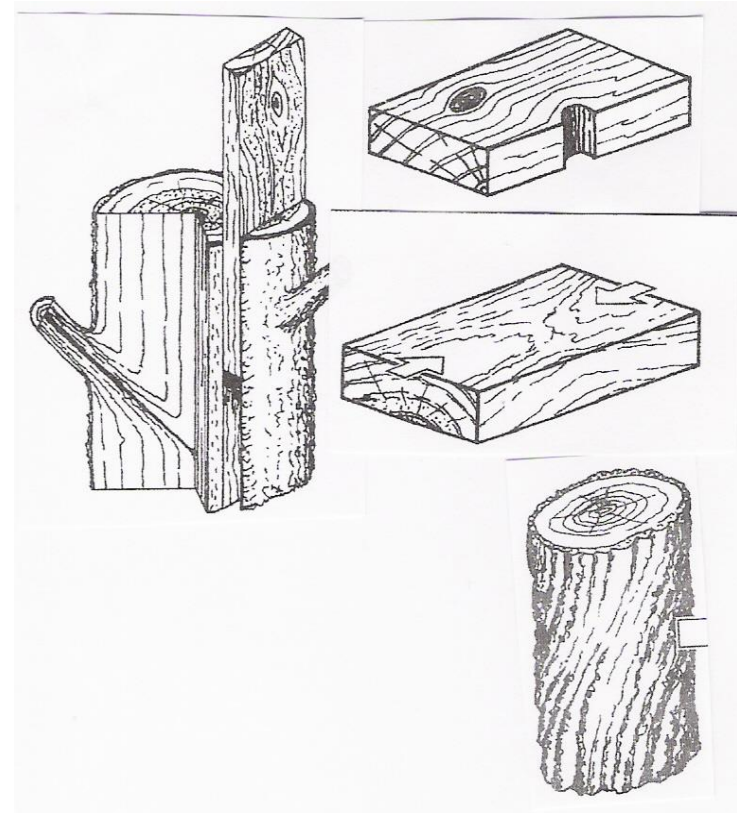
7

- 1 Kringbars/Ring shake
- 2 Reaksiehout/Reaction wood
- 3 Nie-gesentreerde pit/Non centred pith
- 4 Windbars/Wind shake
- 5 Sterbars/Star shake
- 6 Kernbars/Heart shake
- 7 Kernverotting/Heart rot

DEFEKTE : BLOKKE / PLANKE

DEFECTS: LOGS / BOARDS

- Kwaste / knots
- Spiraaldraad / Spiral grain
 - Dwarsdradigheid / Cross grain
- Biologische factore / biological factors
 - Swamme / fungi
 - Termiete / termites
 - Kewers / Beetles
 - Weekdiere / molluscs
- Fisiese factore / physical
 - Vuur / fire
 - Wind



OMVORMING / CONVERSION

BEPALENDE FAKTORE / DETERMINE FACTORS

- Soort hout / type of wood.
- Kwaliteit van blok / Quality of log.
- Grootte en doel / Size and purpose.

SAE BY 'N BLOKMEUL / SAWS AT A LOG MILL

BLOKSAAG / LOG SAW

- BLOKSIRKELSAAG / LOG CIRCULAR SAW
- BLOKBANDSAAG / LOG BANDSAW
- BLOKRAAMSAAG / LOG FRAME SAW

NASAAG / RE SAW

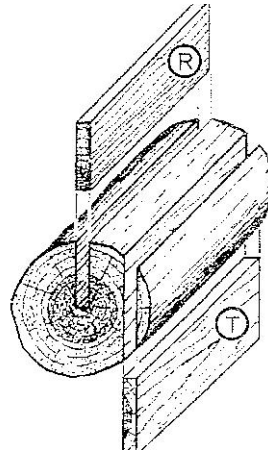
- SIRKELNASAAG / CIRCULAR RE SAW
- BANDNASAAG / BAND RE SAW
- RAAMNASAAG / FRAME RE SAW

KANTSAAG / EDGER

KAPSAAG / CHOP SAW

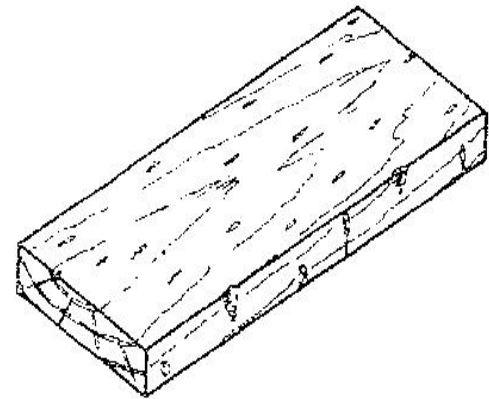
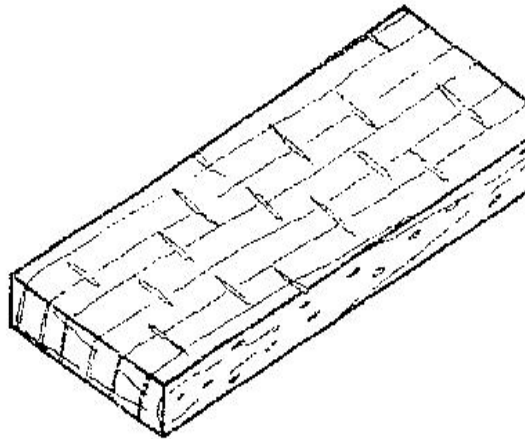
RADIAAL EN TANGENSIAAL RADIAL AND TANGENTIAL

- Planke kom van verskillende liggings in die blok.
- Boards come from different locations in the log.



TANGENSIAAL / TANGENTIAL RADIAAL / RADIAL

- Jaarringe / annual rings.
- Murgstrale / Rays.
- Krimping / shrinkage.
- Geut en draai / Cupping and twisting.
- Droging / Season.
- Kwaste / Knots.
- Weerstand / Resistance.



DEURSNEE / CROSS CUTTING

VOORDELE

- Ekonomies,vinnig,maklik
- Meeste,breedste

NADELE

- Saphoutplanke, geut- draai- trek, oppervlakte barste en wankante

SAE

- Blokbandsaag
- Raamnasaag

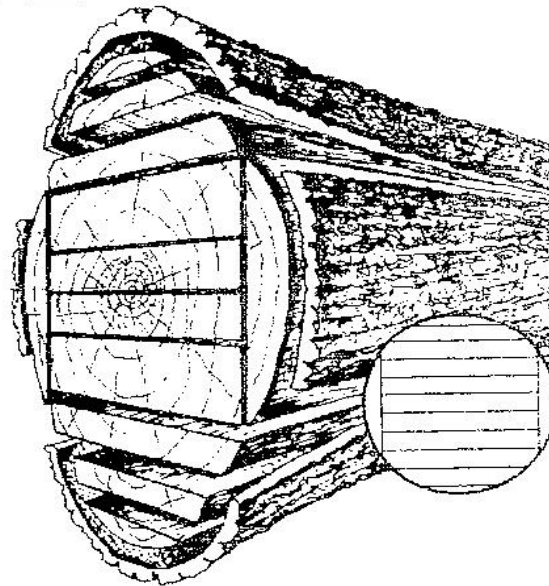
ADVATAGES

- Economical, quick, easy
- Most wood,width

DISADVANTAGES

- Sapwood planks, cupping, twisting, surface cracks and waney edges

SAWS Log bandsaw, frame re saw



KWARTSAAG / QUARTER SAWN

VOORDELE / ADVANTAGES

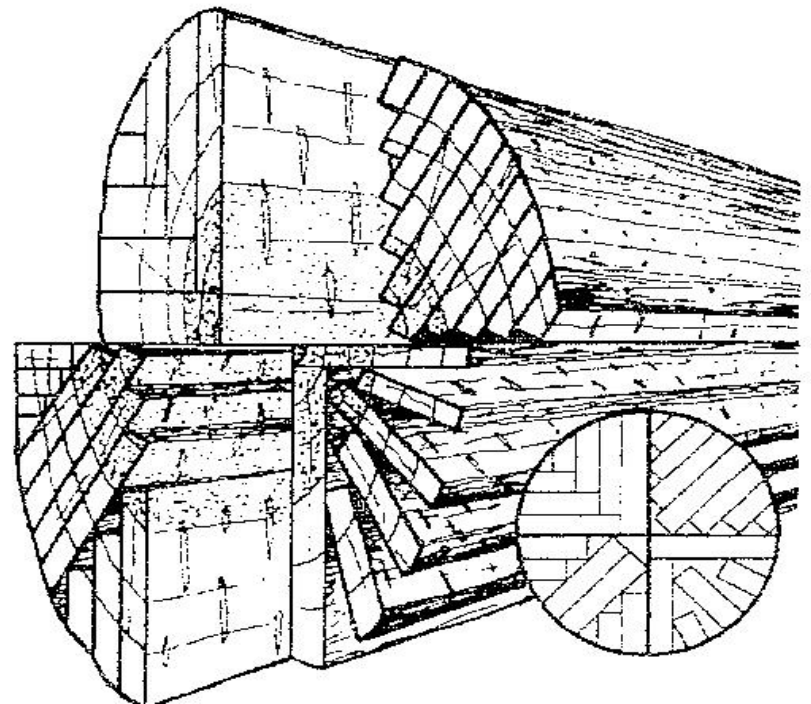
- Stabiel – trek nie maklik krom nie / stable – do not warp easily
- Minder geneig om te bars / Less cracks occur.
- Murgstale veroorsaak mooi patrone op werksvlak / pretty patterns caused by medullary rays on face side.
- Slytweerstand, splint nie maklik / high wear resistance, splinter not easily.

NADELE /DISADVANTAGES

- Vermorsing, duur / waste, expensive
- Tydsaam / leisurely
- Kanttrek / springing
- Planke nie breed / boards not wide.

SAE / SAWS

- Blokbandsaag, sirkel- en bandnasaag
Log bandsaw, circular- and band re saw



VIERKANT / SQUARE SAWN

VOORDELE /ADVANGES

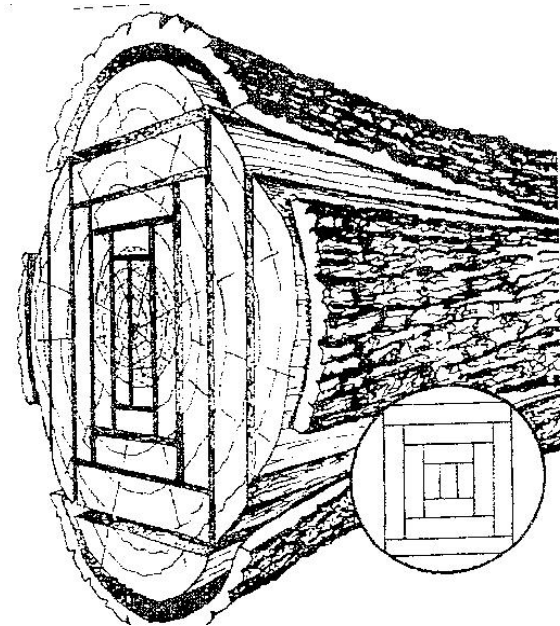
- Planke droog vinnig / Boards season quickly
- Sap-kernhout apart /Sap-heartwood separate
- Kwaste sirkels / Knots circles
- Bars nie maklik / Split not easily

NADELE /DISADVATAGES

- Krimp meer in wydte / More shrinkage in width
- Tydsaam / Leisurely

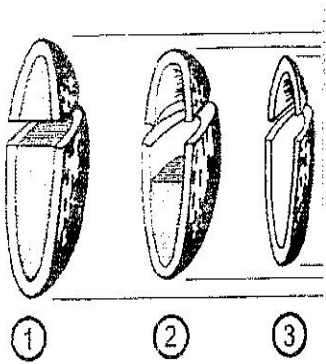
SAE / SAWS

- Blokbandsaag, sirkel- en bandnasaag
- Log bandsaw, circular- and band re saw



VOG / MOISTURE

- Water \pm helfte van nathout / Water \pm half of wet wood
- Vrye vog in selholtes, Gebonde vog in selwande. / Free moisture in cell cavities. Combined moisture in cell walls.

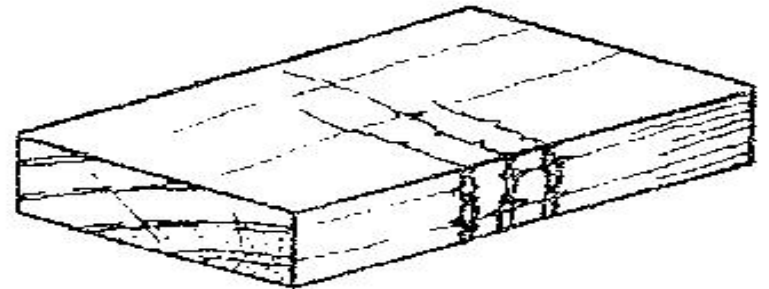
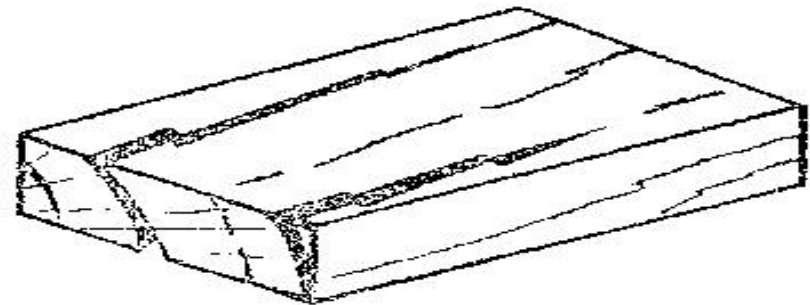


VERDAMPING / EVAPORATION

- Vrye vog eerste. / Free moisture first.
- Ewewigsvoggehalte / Equilibrum moisture content.

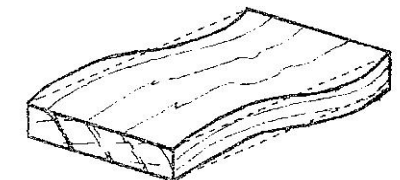
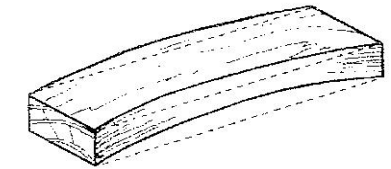
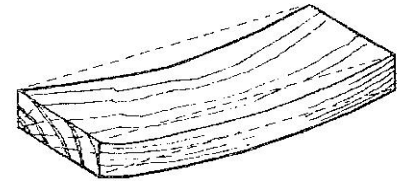
DEFEKTE IN PLANKE / DEFECTS IN BOARDS

- Korsverharding / Case hardening
- Omgekeerde korsverharding / Inverted case hardening
- Barste / Cracks
 - Oppervlakbarste / Surface cracks
 - Kopkantbarste / End cracks
 - Weerbarste / Compression shakes
- Ambrosia-kewers / beetle



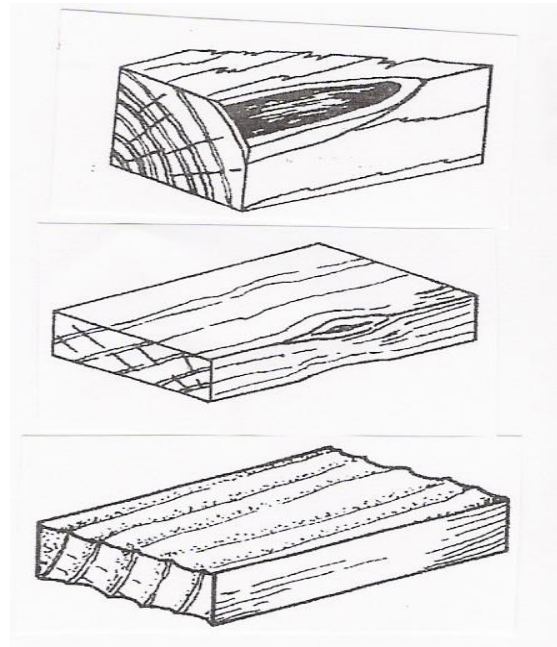
TREKKING / WRAPING

- Afwyking t.o.v. werksvlak / Variation from work surface
- Oorsake is spanning a.g.v: / Cause is stress because of the following reasons:
 - Stapelning met droging / stacking during seasoning
 - Onvoldoende droging / Insufficient seasoning
 - Posisie in blok / location in log
- Boogtrek / Bowing
- Kanttrek / Twisting
- Draaitrek / Springing
- Geuttrek / Cupping
- Golftrek / Waving



DEFEKTE / DEFECTS

- Wankante / Waney edges
- Kneusing / upset
- Instorting / Collaps
- Dwarsdradigheid / Cross grain



AAN DIE VERBYGANGER

- U WAT VERBYGAAN EN DALK U HAND TEEN MY WOU LIG, LUISTER EERS.
- EK IS DIE HITTE IN U VUURHERD IN KOUE WINTERNAGTE, DIE VRIENDELIKE SKADUWEE WAT U TEEN DIE SOMERSON BESKERM EN MY VRUGTE BIED VERFRISSENDE DRANKE OM U DORS TE LES SOOS U VERBYGAAN OP U WEG.
- EK IS DIE BALK VAN U WONING, DIE BLAD VAN U TAFEL, DIE BED WAAROP U RUS EN DIE TIMMERHOUT WAARMEE U BOTE BOU.
- EK IS DIE STEEL VAN U HARK, DIE DEUR VAN U WONING, DIE HOUT VIR U WIEGIE EN DIE WAND VAN U DOODSKIS.
- EK IS 'N GESKENK VAN GOD EN 'N VRIEND VAN DIE MENS
- U WAT VERBYGAAN HOOR MY GEBED EN MOET MY NIE SKADE AAN DOEN NIE.

'N BOODSKAP IN WOUDE VAN PORTUGAL. VRYVERTAAL UIT PORTUGEES